



The Herald

Spring
2008

Hark the happenings of the Historic Langhorne Association

160 West Maple Avenue, Langhorne, PA 19047

215.757.1888

HistoricLanghorne1@verizon.net

http://hla.buxcom.net

HLA has 3 new email addresses for communicating with us at our headquarters...add them to your contacts...

Contact email-

HistoricLanghorne1@verizon.net

Archive email-

hlaarchives@verizon.net

Research email-

hlaresearch@verizon.net

OPEN HOURS

Mondays 7-9 pm

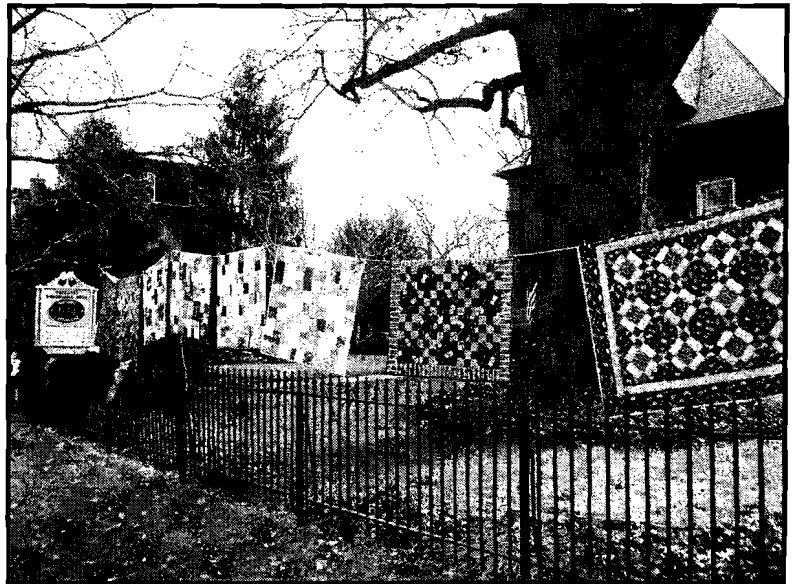
Wednesdays 10-12 pm

7-9 pm

Saturdays 10-12 pm

Or by appointment

Admission is Free



A Remarkable Run.

We recently published, with some incredulity, the telegraphed statement that a train on the Philadelphia and Reading road had traveled a mile in 39 4-6 seconds, or at the rate of over 90 miles an hour says the Railway Age. On writing to General Passenger Agent Hancock for particulars, he sends us a report which fully confirms the statement. He says that the figures named are official, and agree with those made by the officers of the road. The run in which this unparalleled achievement was accomplished was made by a special train drawing two coaches and President McLeod's heavy private car, over a stretch of 12 miles, which was covered in the extraordinary short time of 8 minutes and 45 1-5 seconds. The longest time spent in running any one mile was a fraction over 47 seconds, several miles were made in 42 seconds each, one was made in 40 seconds and one in 39 4-5 seconds. The engine which did this wonderful work is of the Woolton pattern, with 5-foot 8-inch driving wheels, and similar to a number of the fast engines in use on the Philadelphia and Reading and Bound Brook roads. It is not many years since mechanical engineers were ready to prove by figures that it was a mechanical impossibility for locomotives to run more than about sixty miles an hour. We have had many instances of runs at the rate of seventy miles an hour and one or two at over eighty miles, but a speed of ninety miles an hour has hitherto been beyond the highest achievements which have been thought possible for the steam-engine.

Article
left
from
Bristol,
Bucks
County
PA
Oct.15,
1891.

Above is a photo from our January 26 'Quilts for Kids Sew-In'

HLA was part of Quilts for Kids", an organization with 50 chapters in 29 states and the Caribbean, dedicated to transforming discontinued fabric into quilts for children in need.

A great time was had by all as members from the Langhorne chapter had sewn quilts and then displayed their work at HLA. Many people who were not part of the organization, joined in to share in the fun.

We are happy to say they will be returning to HLA on April 26. Don't miss it! To learn more about this great organization visit their website at www.quiltsforkids.org.

A bit about our Monday, April 28 Lecture Series...

Please join us for this informative evening to meet and listen to James McGowan. The Newtown Township author has written several books including "Station Master on the Underground Railroad: The Life and Letters of Thomas Garrett" and "Freedom on the River". He will explore how Harriet Tubman, William Still and Thomas Garrett all were active in trying to get the slaves to freedom via the Underground Railroad.

In addition to writing books, McGowan publishes the Harriet Tubman Journal, and was the narrator and consultant for the public television documentary "Whispers of Angels: A Story of the Underground Railroad." The evening should prove both entertaining and educational.

**Be sure to join us for this presentation at the
Pennwood Library.**

**Our headquarters is located in The Anna Mary Williamson
Library & Museum**

**Langhorne Borough's Environmental Committee Sponsors Program at HLA on
How to Make Your Old Home More Energy Efficient.**

Jen Deeny and her father, Kevin, from K.C. Environmental in Langhorne will present a program on ways to "Go Green" in your older home, Wednesday, March 12, 2008 at 7:30 PM. They will present their findings from studies on energy loss in area homes and solutions for making the older homes more efficient while maintaining their historic character. Additional information on the topic can be found at www.energystar.com, www.usgbc.org, and www.thegreenoffice.com. The presentation is free and open to the public.

An apology...

Historic Langhorne Association wishes to express its deep regret to John Wood for an error in an article in our fall 2007 newsletter in which his donation of an 1891 Map of the Langhorne area was attributed to another person. Mr. Wood has also donated an original 1858 map of Middletown Township. Mr. Wood has been a longtime member and supporter of HLA and we are sincerely sorry for this error.

Old books and new books...we have them all at the Anna Mary Williamson Library & Museum!

The newly published book by Marie Murphy Dues, titled 'Colonial Inns & Taverns of Bucks County' is on sale in our gift shop and now listed on our website. HLA has ordered 100 of the book. Please stop by to look through and purchase if you care to! Stay tuned for an author signing in the works!

Membership Report

Historic Langhorne Association wishes to thank the following local businesses for their support since our last newsletter:

Corporate Patron: Sam's Club (Wal-Mart Stores)
1717 E. Lincoln Hwy., Langhorne

Corporate Donor: Langhorne Tax and Bookkeeping, Inc.

HLA also thanks the following individuals who have renewed their memberships for the 2007-08 year since our last newsletter:

Century Group: Romaine and Bill Macht
Terri and Ward Doerschuck

Patrons: James and Nancy Ennis
Phil and Debbie Miele

Individual and family members:

Nancy Janyszeski Alan Nixon Audrey Pfielsticker
Erin-Caitlin Rinker George Sengpiel Ed Toland

If you have not had the opportunity to renew for this year, it is never too late. Membership applications are available at our website or at the Library. Your support is very important to us.

If you have any questions about your membership, please call HLA and leave a message for me or send an e-mail message to me at the Association's address included in this newsletter.

Jack Fulton
Membership Chairman



Cartoon from the
1920 Delaware Valley Advance
Researched by Charles Lauble

Portrait below of Mrs. Mabel Eichel



Who Was Mabel Jacques Eichel?

By Larry Langhans

In the back room of Historic Langhorne hangs a pastel portrait of Mabel Jacques Eichel done by local artist Cynthia D. Coates. Many people who visit Historic Langhorne ask who she was, so this article is to tell about fascinating women in Langhorne history.

Mrs. Eichel came to Langhorne in 1953 from Wilton, Connecticut. She was the widow of Dr. Otto Eichel who died in 1923 in Geneva, Switzerland while serving as a medical director with the League of Nations. Described as one of the most devoted workers at the old Langhorne-Middletown Library, Mrs. Eichel spent sixteen years "molding the Langhorne-Middletown Library into an important cultural landmark in the community" as noted in her obituary. She originated and organized its annual book fair, a major source of revenue for the library. Hundreds of the letters she wrote to organize the fair are stored in Historic Langhorne's archives. In 1968 the library's directors presented her with a plaque honoring her 15 years of dedicated service.

A native of Plainfield New Jersey, Mrs. Eichel graduated from St. Mary's Hall in Burlington and later worked for newspapers in New York City, Buffalo and Philadelphia. During the nineteen-thirties she was active in New York City doing public relations work and as an organizer and fund-raiser in political and civic movements. She became involved in New York State Women's Suffrage Party and directed the New York State Women's Land Army. In 1933 she directed the women's division in the successful Fusion party campaign to elect Fiorello LaGuardia mayor of New York. In 1936 she organized and was national director of the Independent Coalition of American Women. In Langhorne, she did volunteer publicity work for community organizations including the Langhorne Sorosis and the YWCA. She also wrote a book review column for the Courier Times. Mabel Eichel died in 1969 at the age of 88. Her Memorial Service was held at St. James Episcopal Church in Langhorne.



8

BELLEVUE INSTITUTE.

History; Brook's Mental and Written Arithmetics; Greenleaf's Algebra; Brook's Geometry and Trigonometry; Harkness' Latin Grammar and Lessons; Fasquelles' French series; Wickersham's School Economy and Methods of Instruction.

BELLEVUE, July 20, 1868.

ORDER OF STUDIES.

FIRST YEAR.

Latin Lessons.
Latin Prose Composition.
Higher Arithmetic.
History.
Physiology.
Higher Grammar.
Physical Geography.
Mental Arithmetic.
Reading.
English Composition.

SECOND YEAR.

Hanson's Latin Prose.
Latin Prose Composition.
Geometry.
History.
Rhetoric.
Botany.
Algebra.
Reading.
English Composition.

JUNIOR YEAR.

Virgil.
Latin Prose Composition.
Trigonometry.
Chemistry.
English Literature.
Astronomy.
Zoology.
Natural Philosophy.
English Composition.

SENIOR YEAR.

Cicero, Horace.
Geology.
Mental Philosophy.
Moral Science.
Political Economy.
Philosophy of History.
Elements of Criticism.
English Composition.
Review.



The Memory Box

Do you have a special memory of Langhorne? Perhaps something that is no longer there? Oral history is part of what we do at HLA as well!

A Langhorne memory from our president, Jim Maier

I must confess.....I grew up in Feasterville. Having moved into my house on Christmas Eve, 1990 I still feel new to the neighborhood. Other than attending Neshaminy High School, I was not in Langhorne that often.

My grandparents lived in an old farmhouse between Route #1 (Superhighway) and Highland Ave. I have many memories of visiting that house, cutting the grass on the old 1947 Farmall Tractor and also enjoying the swimming pool in the summer. We would occasionally go out to eat with my grandparents at the Blue Fountain Diner, Starlight Diner, which was where the Great American Diner is now, and also Inn Flight in Langhorne which is now gone.

Above-1868 copy of the course of study for the Bellevue Institute for Girls that was located at the corner of North Bellevue and Winchester Avenues. If you remember, our Winter 2005 newsletter did an account on this academy.

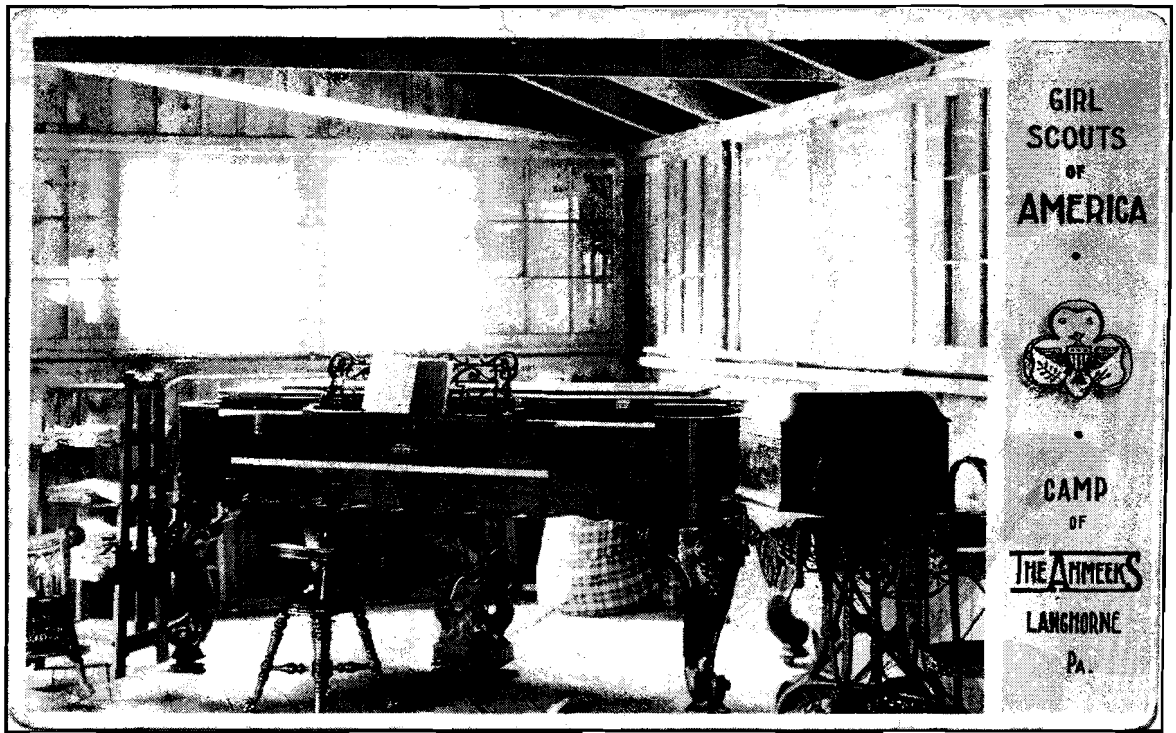
Mystery Postcards

The two postcards on this page were submitted by our president, Jim Maier. Jim is very involved with researching, copying and labeling our archives. Many times our archivists find things in the files and have no idea where they came from or where they were in Langhorne. Jim came upon these postcards in our archives and was hoping someone could supply any information.

Please contact HLA if you have any information.

Call us-
215-757-1888

Or email us-
Archive email
hlaarchives@verizon.net

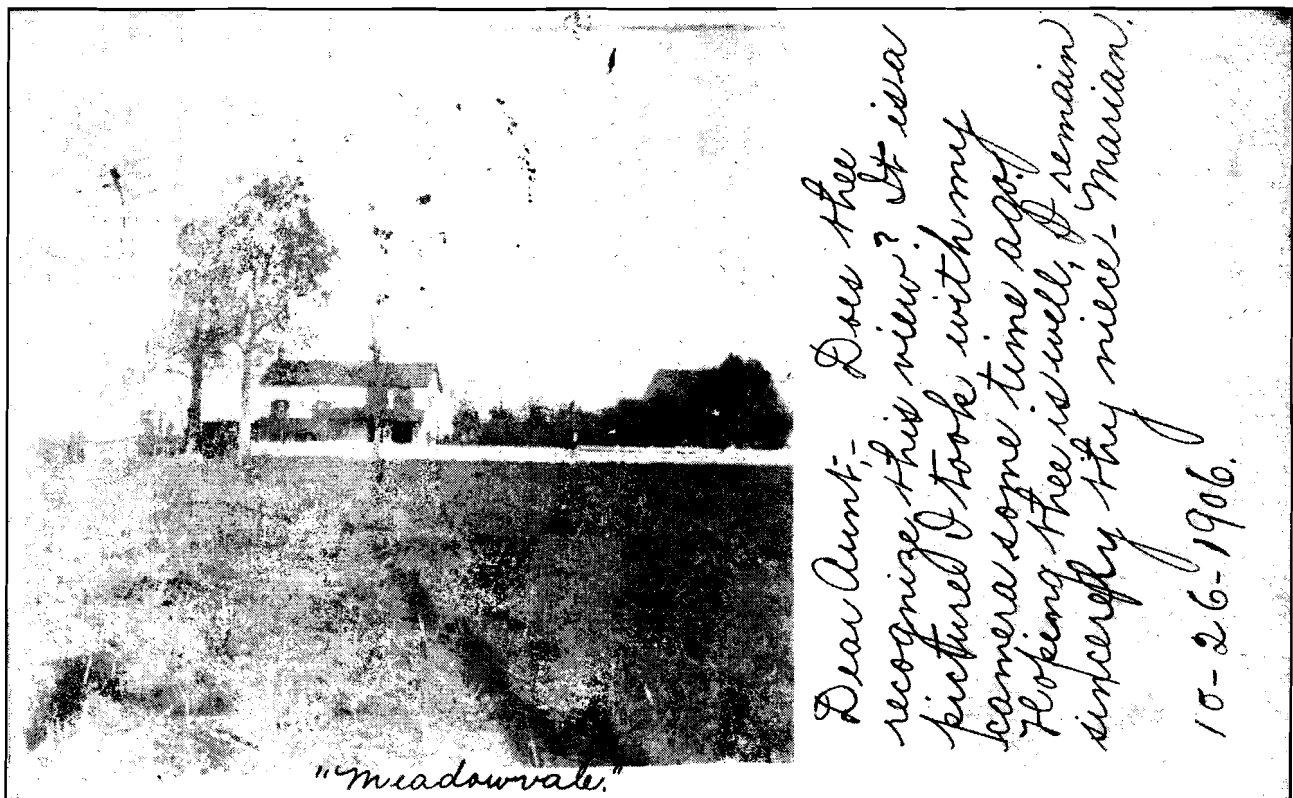


Postcard above:

This Girl Scouts of America Camp of the Ahmeeks postcard was mailed in 1921 from Langhorne. Whereabouts of the camp are unknown. We have contacted the Girl Scouts headquarters and they have no records of this Camp. If you have any information on this Girl Scout Camp, please contact our Archives Department.

Postcard below:

This Real Photo Postcard of "Meadowvale" was photographed in or near Langhorne and also mailed from Langhorne in 1906. Notice the unusual layout of windows and the two different height porch roofs. If you have any information on this building's whereabouts, please contact our Archives Department.



HAPPENINGS IN LANGHORNE AND OUR ENVIRONS

By Charles Lauble

Langhorne way back almost became the county seat. The Bucks County Court was formed in 1683 and was located at or near the home of William Biles at a place then known as "Crookthorn," situated on the road leading from Tullytown to the former Bordentown Ferry, or two miles down the Delaware River from Morrisville. That Court was established in 1683. The court house and jail were built by Jeremiah Langhorne sometime before 1686. It was of hewed logs covered with clapboards and served as both the court house and jail. It was two stories high, with a hipped roof and measured 20 by 40 feet on the ground. In 1705, the court was moved to Bristol, or New Bristol, as it was then called. It was moved to Bristol by reason of complaints that the Court at Crookthorn was too far removed from the center of population and by reason thereof was inconvenient to the people of the settled portion of the county. Four Lanes End was suggested as the most convenient place to relocate it at the time being closer to the center of the settled portion, but for some unknown reason it was moved to Bristol instead. That this was an unwise choice of location is shown by the fact that twenty years later it was moved to the Township of Newtown as being closer to the geographical center of the then settled portion of Bucks County.

When iron ore was located up around Durham about the 1720's and the Durham Iron Company was formed in 1726 only one Bucks County resident was a partner. The company was formed by 12 gentleman of the time and 11 were from Philadelphia. The Bucks County resident was Jeremiah Langhorne, also associated with one of the first mills ever in Bucks County. This mill was built on Chubb Run Creek a little above what is now Comly Ave. and still shows up on our archived 1858 map of Middletown Township in the Langhorne Park section donated to us by John Wood. On our archived 1876 Bucks County Atlas maps it no longer shows up.

During the Civil War the women of this neighborhood seem to have been quite active. There was a society formed to care for the soldiers called The Ladies' Aid, Langhorne then being known as Attleboro. This society held an all-day meeting every Wednesday in the town hall over what was eventually Dr. Pemberton Minster's drug store at 105 East Maple Avenue. There was a long table in the room about which the ladies gathered to scrape lint and cut and sew garments for the soldiers in the field and hospitals. They knitted, canned, baked and did what the Red Cross eventually was doing years later. At that time communities had their own regiments and the ladies worked for them, often driving in carriages to camps and hospitals with clothing and food they had made and prepared. They raised money in various ways to carry on this work. At one "fair" they had a large tree filled with gifts which were chanced off at ten cents a chance.

Those active in the town war work were Annie Watson, Jane Wildman, Lizzie, Rebecca and Jane Swartzlander, Rachel Minster, Anna Richardson, Effie File, Tacy and Anna Mather, Lizzie Comfort, Mary J. Richardson, Susanna and Maryann Palmer. At the Palmer farm many bottles of cherry syrup were made and sent to the hospitals. Annie Watson the mother of Henry W. Watson, once our area representative in Congress, started the sewing upon the immense Attleboro flag, which was made by the ladies in the town hall. The flag, battered and torn, for years after was used in all the political and other parades of the town. Dr. Minster had charge of the flag in his own home and after his death it was seen floating from the window of the Odd-Fellows' Hall for many years.

Idaho Daily Statesman
October 14, 1891

A Mile in Forty Seconds by Rail.

A mile in 39 4-5 seconds, or at the rate of over 90 miles an hour, is the fastest run ever made by a railroad train. This unparalleled feat has been accomplished on the Bound Brook railroad, between Neahaminy Falls and Langhorne, by engine No. 206, drawing two ordinary coaches and President McLeod's private car Reading, which is equal to two coaches in weight. Other miles were reeled off with speed as astonishing as this crack mile, and at the end of the "fly" the world's record was broken. From this out all records must date from the memorable Bound Brook flight. The fastest mile was scored in 39 4-5 seconds. The fastest five miles in 3m. 26 4-5s. The fastest ten miles in 7m. 12s., averaging 43 seconds per mile.—Philadelphia Record.

J. P. CHINN.

Successor to Chinn Bro.

DEALER IN

Harness & Saddlery

GOODS

Of every description. Repaired, new, attended to at reasonable rates. Hand made team harness a specialty. Give me a call.

J. P. CHINN.

118 MAIN STREET.

Boise City,

B. H. Coleman & Co

Successors to

The A. P. HOTALING CO.

BOISE CITY, IDAHO.

Importers and Wholesale Dealers

SOLE AGENT

J. H. CUTTER WHISKIES

Articles researched by Charles Lauble.

Right—an article from 1893

Left—Another railroad record article from the same time period as the one on page 1 of the news-letter.

REDUCTION IN RATES.


The Pennsylvania Railroad Company will, on November 1st, adopt the following revised tariff of rate between Philadelphia (Broad Street) and stations on its "Trenton Cut-off":—

	SINGLE.	EXCURSION.	MONTHLY.
Fort Hill	\$0 88	\$0 02	\$7 50
Dresher	45	03	7 05
Horsham	47	03	7 05
Roxton	73	08	9 00
Langhorne	73	08	9 00
Dunlap	80	1 07	10 80
Fallsington	90	1 22	14 10

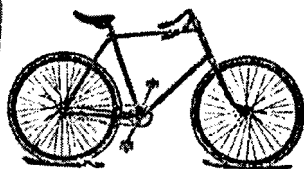
Quarterly tickets will be issued at the usual ten per cent. discount from monthly rates, and monthly school tickets at two-thirds of the monthly rate.

It is hoped that this marked reduction in rates will result in such an accession of travel as will justify material additions to the train service, and thus play an important part in the development of the very attractive territory traversed by this line.

Elly's Cream Balm For
CATARRH
 THE POSITIVE CURE.
 ELY BROTHERS, 66 Warren St., New York. Price 10 cts.



1893
ads



**GREAT DROP IN
--BICYCLES--**

In order to compete with the cut made in New York and Philadelphia on Bicycles I have made the following reductions:

Reading Flyers for \$20, reduced from \$115	
Majestic " 85, " 115	
Lovel Diamond " 90, " 115	
Warwick " 85, " 130	
Credence Diamond, 70, " 90	

I can sell you a brand new, full size, pneumatic tire bicycle for \$50.

All the above are 1893 models, are new and guaranteed for one year. You need see no other buying, I can save you money.

I have some great bargains in second-hand wheels.

G. Schiesser, Jr.
 Cycle Agent,
 207 Washington Street.



Lewis J. Bevan,
 Stoves, Furnaces, Ranges
 House Furnishing Goods.

NO. 10 MILL STREET,
 BRIDGE PL.

**New to our newsletter will be a
Community Bulletin Board!**

Langhorne has so many great organizations. We should all work together for the service and advancement of the community. Let us know if you have an event you want us to publish in our newsletter and we will be more than happy to!

As part of this effort...HLA will be part of the **Langhorne Council for the Arts, 'Artist in the Garden Tour' on Saturday May 31, 2008.**

Stroll through gardens in Langhorne Borough and view artwork by local artists. See the beauty of our local gardeners & artists. HLA will be on the tour featuring an artist and the building will be open as well. For information on this organization and event call 215-752-0854 or go to their website-langhornecouncilforthearts@comcast.net

TAKE NOTICE

SATURDAY MARCH 29th 2008

All able bodied young men and women in this neighborhood and surrounding countryside. ENLIST!! ENLIST!! Troops are now being raised for General George Washington's Continental Army.

Historic Langhorne Association presents:

Citizen to Soldier:

Life in the Continental Army

Families are welcome to come join the fun and participate in this interactive

educational program for children on the life of a Revolutionary War Soldier.

Children will have the opportunity to enlist in the Army and participate in marching formations; infantry drill and experience the daily life and duties of the common soldiers who fought in the War of Independence.

**2008 Coming Attractions at
Historic Langhorne Association**

Wednesday, March 12, 7:30pm

'Go Green' in your older home

Langhorne Borough's Environmental Committee Sponsors Program at HLA on How to Make Your Old Home More Energy Efficient.

See the article in this newsletter on page 2 for more about this topic.

Monday, April 28, 7:30pm

Lecture Series

The Underground Railroad! Presented by James McGowan. See article about Mr. McGowan on page 1 of the newsletter. *Please note that this lecture will take place at the local public library, the Pennwood branch on Pine St. (Rt. 413) & Flowers Ave.*

Sunday, May 4, 1-3:30 pm

An Afternoon Tea

Please join us once again this year for our scrumptious tea. Our menu will feature the classic tea fare of scones, jams, tea sandwiches and sweet desserts. A visit by historic enactor, who will portray a colonial patriot. Let her entertain you with her stories about life in the colonies. See insert for more details.

Monday, May 26

Langhorne Memorial Day Parade

As usual our building will be open for the people who stroll by! Welcome summer!

Sunday, June 8, 3-7 pm

Annual Strawberry Festival

Come celebrate the local strawberry harvest and enjoy fresh strawberries on pound cake with vanilla ice cream. Fun, food, music and crafts for all ages!

Thursday, June 26

Broadway at the Beach 'The Producers'

A bus trip to the Surfflight Theater in Long Beach Island to see this great stage play. \$70/person includes play, lunch at The Plantation restaurant in Harvey Cedars, bus, and an added attraction: a visit to the historic Barnegat Lighthouse for a stroll on their promenade for some fresh salt air and a great view of the ocean! Limited to 50 people. (See insert in this newsletter)

BITS & PIECES

- Did you know our headquarters, the Anna Mary Williamson Library & Museum is available to rent? Call us!
- We periodically send an email announcement of upcoming events at Historic Langhorne Association to our members and friends. To be included, please send your name and email address to Jim at historiclanshorne1@verizon.net
- Check out our new 'Corporate Sponsors' page on our website at <http://hla.buxcom.net/>
- A thank you to Denny's Electric for donating our new outside light fixtures & Armour Electric for donating the bulbs!
- Feel like trying something new this spring? Stop by HLA and see all we do and have yet to do. Maybe you would like to volunteer a bit of your time? We have many areas of interest to choose from. Pick the one that suits you best!

Once again, DeFrehn Roofing Co. has generously donated their time to inspect and repair our building's slate roof. We extend many thanks to Jeff DeFrehn for his contribution of time & services to our association. In appreciation, the board at Historic Langhorne Association had granted him a lifetime membership!

Yes, we have a friend in DeFrehn!

Historic Langhorne Association's 2008 Officers & Committee Members

President- Jim Maier

Vice President- Larry Langhans

Treasurer- Jack Fulton

Recording Secretary- Evelyn Aicher

Corresponding Secretary- Lynda Johnson

Technology- Charlie Lauble & Jim Maier

Artifacts- Evelyn Aicher & Ruth Irwin

Publicity- Joy Ward

Hostess- Nancy Pietsch

Archives- Larry Langhans & Jim Maier

HLA Gift Shop- E. Aicher & Judy Sloan

Finance- Jack Fulton

Genealogy- Beverlee Felkner

Holiday House- Open

Library- Jean Noble

Membership- Jack Fulton

Newsletter- Sally Marrington

Oral History- Open

Programs-Open

Property- Charles Lauble

Sun Shine- Nancy Pietsch

Ways and Means- Jean Noble

Grant Advisor- Kathy Horwatt

House Plaques- Judy Sloan

Tea- Lynda Johnson

PICTURE YOUR NAME HERE & VOLUNTEER !